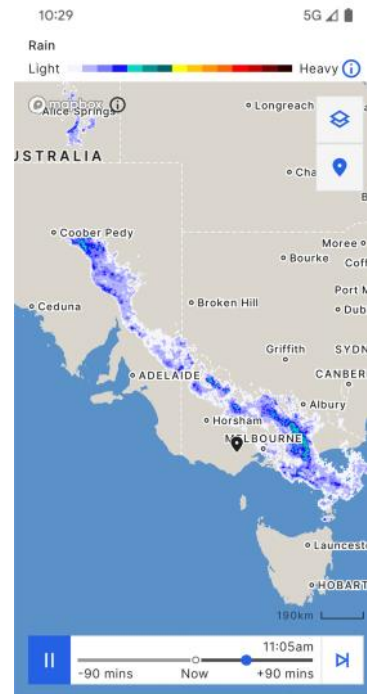


Sunday 24 November, 2024

Linton Run

Attendees: Alan & Pam Stork - (Leaders) - 2000 Mitsubishi TJ Solara Wagon, Daryl D - (Back Marker) - Mazda MX5, Dave W - 2008 Suzuki SV650, Joanne H - Royal Enfield, Darren H - Triumph Tiger, Shane P - Holden Ute, Rob T - Isuzu D-Max, Lionel W - Range Rover, Alan & Dawn E - Mercedes Benz, Peter R - Holden GTS Ute, Mark R - Ute, Ian B - Holden Commodore



On Saturday, Sunday's weather forecast was not looking good. (It was looking even worse at 10:29 am on Sunday morning!) So that afternoon, Alan put the word out to those who had expressed interest in joining him on the Motorcycle Only Ride that he didn't want to cancel the event, so he encouraged them to still come along, in their cars - and they did, well, most of them. We had three brave souls who ventured out on their motorbikes. Well done Joanne, Darren and Dave. (It was good to meet Joanne for the first time, and great to catch up with Dave, who we hadn't seen for a while.)

Most of us met at the new rendezvous point at the Shell servo in Sebastopol at around 10:00 am. We enjoyed a cuppa and chat before setting off. Pete R turned up in his very impressive Holden GTS ute, which we all had to have a close look at, especially under the bonnet.





Above:
CRD managed to commandeer almost the entire dining area at the Shell servo

Above:
It is good to have a lady rider amongst us again. Welcome Joanne. We look forward to seeing you on many more of our future rides and events.



The roads were wet, and slippery looking. The skies were dark and threatening; and yet we did not encounter any rain the whole day!

Go figure that one.





Always very professional, with the best interests of our members at heart; Alan gave his usual Riders/Drivers brief before leaving the servo; carefully detailing the route he had “planned” to take.



But...the best laid plans have a way of going awry. He didn't do a reccy, did he? And there was a major detour along the Rokewood/Berringa Road, wasn't there!!
(Photo taken at the end of the detour)

Fortunately, the gravel road that went for several kilometres was not too rough, and the bikes managed it quite well. But, boy, was Alan's face red, and was he feeling guilty and apologetic when we arrived at the Railway Hotel at Linton.



Ian arrived just a few moments after the main group. Great timing.





After ordering drinks and meals in the bar, everyone made their way into the dining area



We actually had a record-breaking number of participants on this outing, for a Motorcycle Only Ride.

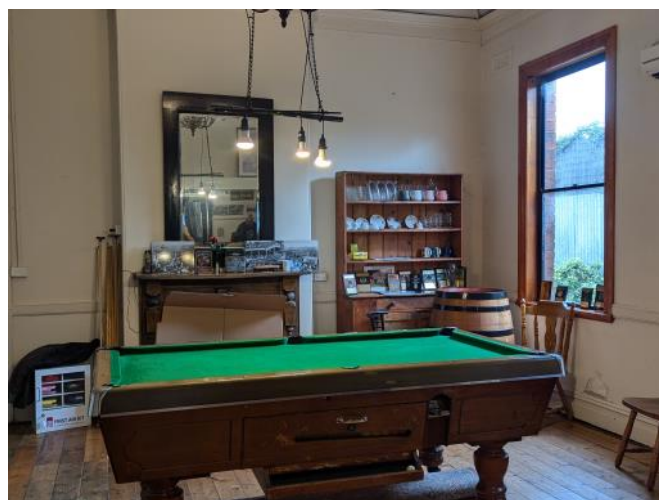
Alan has decided that in future we will open up the events to all vehicles, with an emphasis on motorbikes and the enjoyment of our riders.



Our hosts at the Linton Railway Hotel couldn't do enough to look after us and to ensure that we had a good time.

The meals were excellent, served promptly and with a friendly smile.

We all agreed that we will have to come back again.





In fact, our hosts were so keen to make sure we enjoyed ourselves that they handed out free raffle tickets to everyone and offered bottles of wine to the two “lucky” winners.

Alan was the first winner, but somehow we think they rigged it, to thank him for hosting the event. Shane was the winner of the second draw.

It was a lovely gesture, and much appreciated by all.



The menu was basic pub cuisine, but the meals were tasty and well presented.

We hope that everyone had a great day out, we certainly did. It was amazing how the rain held off, but those who came in cars and not on their bikes didn't seem to mind too much. It was an opportunity to catch up again and have some fun.

The hotel is a hidden treasure, and we will be putting it back on the calendar in 2025.

Thank you everyone who joined us and made the day so much fun. Thank you to Daryl for going Back Marker and for supplying photos from the day.

Our next event is special - it's our Christmas Lunch!!!! See you all there.



Combined Christmas Lunch Run



Sunday

08 December, 2024



Departure Point:

Starbucks

Delacombe Town Centre
315 Glenelg Highway
Delacombe



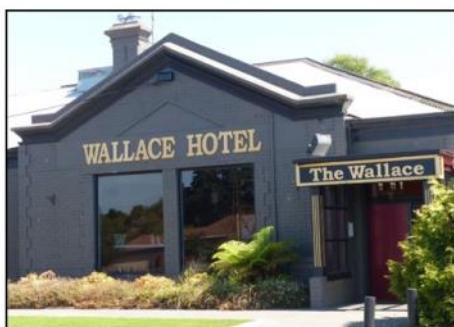
Arrive at

Earlier
time of:

9:30 am

For Departure time of:

10:00 am



Destination:

The Wallace Hotel
Wallace

741 Bungaree/Wallace Road, Wallace

Arriving: 11:30

To Say "Thank You For Attending"

Each Financial Member
will receive

\$20 in Cash

To go towards their meal at
The Wallace Hotel
(*\$10 for children under 16*)



*Envelopes containing cash will be
given out on the day, at the Hotel*



RSVP For This Event

Is Essential

Without Exception

Contact:

Alan Stork - Mobile 0401 995 061

NO LATER THAN MIDDAY

Friday 6 December, 2024

Email: classicridesdrivesclub@gmail.com

Web: www.classicridesdrivesclub.org

(using the RSVP Form on our Calendar page)



Motorcycle Only Rides

Last Sunday of Every Month



Departure Point:



Shell Sebastopol Service Station
112-118 Hertford Street, Sebastopol
Arrive 10:00 am for a coffee and a chat

Ride will depart when everyone is ready to leave

Destinations and Details will be posted prior to the event, if known,

If not, we will decide on the day

All rides are Weather Permitting - Guests/Friends Always Welcome

Contact Alan Stork

Mobile: 0401 995 061

Email: classicridesdrivesclub@gmail.com

Web: www.classicridesdrivesclub.org

"Calendar" page RSVP Form

Next Motorcycle Only Ride will be on

Sunday 29 December, 2024

Details to be provided closer to the date

To ensure that all members and visitors feel safe and are able to enjoy their time with us, we ask that anyone participating in any event conducted by Classic Rides & Drives Club Inc. follow this Code of Conduct:

- Obey all laws at all times, including COVID, road laws and Club Permit Scheme rules
- Any vehicle participating in a club event should be safe for road use
- Participants should ride/drive within the limits of their capabilities, weather conditions, etc.
- Be respectful to all participants and the public
- Never put anyone or anything at risk by behaving in an unsafe or reckless manner
- Never behave in a manner that would be deemed to bring disrepute to the club

Guidelines for Participating in a CRD Club Run

If the participating numbers are large (more than 10 vehicles), the run will be conducted with a Leader and a Back Marker. These two participants will have mobile phones and each other's phone number to enable contact in case of any problems or emergencies.

Slower moving vehicles can cause the dynamics of a run to fail. If for any reason you do not wish to, or your vehicle is not capable of travelling at a maximum speed of 100 kph, tell the Leader before departing. We are happy to accommodate by splitting the run into various groups, each with a Leader and Back Marker. The slower group will always leave last, and the first group (usually bikes only, followed by cars) will always wait for them when re-grouping.

If you would rather travel at your own pace, or take your own route, and then meet up with the group at the final destination, or some other point along the way, that's fine. Just make sure the Leader and Back Marker know before the group leaves the departure point

Remember: You are participating in a fun group event, NOT a race

It is a delicate operation to keep a moving group together, especially when traffic is heavy. Everything that can be done, will be done to ensure no one is "lost" on a run, but it is up to each participant to follow these basic guidelines and respect their fellow travellers:

- **NO PARTICIPANT SHOULD EVER OVERTAKE THE RUN LEADER**
- **MOTORCYCLISTS CAN MARK CORNERS ONLY IF THERE ARE NO CARS PARTICIPATING**
- Always arrive at the departure point on time with a **full tank of fuel**. If your vehicle has a limited fuel range, let the Leader know so that they can accommodate your needs
- When travelling in a group, **ALWAYS** keep the participating rider/driver behind you in your **rear-view mirror**. This may mean slowing down, and even stopping if necessary
- If you see that the vehicle immediately behind you **fails to proceed/disappears from sight**, pull over to a safe spot and wait. The rest of the group and Back Marker will eventually catch up and stop as well. This should cause a chain reaction (known as the "Rubber Band" effect) that should bring the Leader to a halt. The Leader will be updated by phone by the Back Marker. The group should proceed again once the situation is under control
- In the event of a **break-down**, or emergency, pull over to a safe place and wait for the Back Marker to arrive. Explain your situation, and that person will do what is required to provide assistance and to notify the Leader - **Please do not pull over unnecessarily. Only the Back Marker is required to stop to assist**
- If you have to **pull out of the run** for any reason and cannot wait until you reach the next re-grouping point, wave the vehicle behind on, and leave a message with the Back Marker to advise you are not proceeding but are not in need of assistance. **Do not overtake the run leader to depart group as this is dangerous and causes confusion**
- If you take a **wrong turn, or miss a corner**, try to re-join the group in a safe manner, or leave a phone message with the Leader or Back Marker. You will have a run sheet, if possible, do your best to reach the destination or the next stopping point. If not possible, please let either the Leader or Back Marker know your situation and if you require assistance
- If you see the **vehicle behind you take a wrong turn, keep going**. If they apply the above guideline, they should be okay. Continue to keep the next participating vehicle in your rear-view mirror
- **Never overtake on the left**, and please show **courtesy when passing** other vehicles

Most Importantly: ENJOY YOURSELF and STAY SAFE

DISCLAIMER:

The Classic Rides & Drives Club Inc will not be liable for any damage, injury or loss caused directly or indirectly by anyone participating in a CRD event/activity, whether to the participant, or to any other party. Participants will fully indemnify and hold the club harmless in connection with all claims arising from such damage, injury or loss.

Child Protection Policy: Any child participating in a CRD event will be under supervision of their parent/guardian at all times.



Classic Rides & Drives Club Inc

Don't miss out on the fun,
stick this calendar on your
fridge today

2024

January						
S	M	T	W	T	F	S
	1	2	3	4	5	6
7	8	9	10	11	12	13
14	15	16	17	18	19	20
21	22	23	24	25	26	27
28	29	30	31			

February						
S	M	T	W	T	F	S
				1	2	3
4	5	6	7	8	9	10
11	12	13	14	15	16	17
18	19	20	21	22	23	24
25	26	27	28	29		

March						
S	M	T	W	T	F	S
					1	2
3	4	5	6	7	8	9
10	11	12	13	14	15	16
17	18	19	20	21	22	23
24	25	26	27	28	29	30
31						

April						
S	M	T	W	T	F	S
	1	2	3	4	5	6
7	8	9	10	11	12	13
14	15	16	17	18	19	20
21	22	23	24	25	26	27
28	29	30				

May						
S	M	T	W	T	F	S
			1	2	3	4
5	6	7	8	9	10	11
12	13	14	15	16	17	18
19	20	21	22	23	24	25
26	27	28	29	30	31	

June						
S	M	T	W	T	F	S
						1
2	3	4	5	6	7	8
9	10	11	12	13	14	15
16	17	18	19	20	21	22
23	24	25	26	27	28	29
30						

 = Mothers Day

July						
S	M	T	W	T	F	S
	1	2	3	4	5	6
7	8	9	10	11	12	13
14	15	16	17	18	19	20
21	22	23	24	25	26	27
28	29	30	31			

August						
S	M	T	W	T	F	S
				1	2	3
4	5	6	7	8	9	10
11	12	13	14	15	16	17
18	19	20	21	22	23	24
25	26	27	28	29	30	31

September						
S	M	T	W	T	F	S
	1	2	3	4	5	6
7	8	9	10	11	12	13
14	15	16	17	18	19	20
21	22	23	24	25	26	27
28	29	30				

 = Fathers Day

October						
S	M	T	W	T	F	S
		1	2	3	4	5
6	7	8	9	10	11	12
13	14	15	16	17	18	19
20	21	22	23	24	25	26
27	28	29	30	31		

November						
S	M	T	W	T	F	S
					1	2
3	4	5	6	7	8	9
10	11	12	13	14	15	16
17	18	19	20	21	22	23
24	25	26	27	28	29	30

December						
S	M	T	W	T	F	S
	1	2	3	4	5	6
7	8	9	10	11	12	13
14	15	16	17	18	19	20
21	22	23	24	25	26	27
28	29	30	31			

Combined Runs for March, May & June shifted to the first Sunday of the month due to Long Weekends & Mothers Day

 = Combined Runs	 = Public Holidays	 = Motorcycle Only Rides
---	---	--